



**PowerTrim™ 18 Gauge Brad Nailer (Model P18-200)**

**PowerTrim™ 18 Gauge Brad Nailer – Stapler  
(Model P18-FS200)**



**IMPORTANT!**

**DO NOT DESTROY**

It is the customer's responsibility to have all operators and service personnel read and understand this manual.

**OPERATING MANUAL AND  
TOOL SCHEMATIC**

# INTRODUCTION

The PASLODE® 18 gauge brad nailer and brad nailer-stapler are quality-built tools designed for use in DIY and contractor trim applications. This tool will deliver efficient, dependable performance when used according to the manufacturer's guidelines. Please study this manual including the safety instructions to fully understand the operation of this tool.

**DO NOT ATTEMPT TO OPERATE THE TOOL UNTIL YOU READ AND UNDERSTAND ALL SAFETY PRECAUTIONS AND MANUAL INSTRUCTIONS.**

## TOOL WARRANTY AND LIMITATIONS

Paslode warrants that newly purchased power fastening tools, parts and accessories will be free from defects in material and workmanship (excluding wear parts) for the period shown below, after the date of delivery to the original user.

### 90-DAY LIMITED WARRANTY

A 90-day warranty will apply to all parts, except those which are specifically covered by an extended warranty.

### EXTENDED LIMITED WARRANTY FOR ON SITE CONSTRUCTION APPLICATIONS

A one year warranty will apply to all housing and cap assembly casings.

### NORMAL WEARING PARTS

The following parts are considered normal wearing parts and are not under warranty:

- Bumper
- Drive Blades
- O-Rings & Gaskets
- Piston Rings & Assemblies

### WARRANTY STATEMENT

Paslode's sole liability hereunder will be to replace any part of accessory which proves to be defective within the specific time

period. Any replacement part or accessories provided in accordance with this warranty will carry a warranty for the balance of the period of warranty applicable to the part it replaces.

This warranty is void as to any tool which has been subjected to misuse, abuse, accidental or intentional damage, used with fasteners not meeting Paslode specification, size or quality, improperly maintained, repaired with other than genuine Paslode replacement parts, damaged in transit or handling, or which, in Paslode's opinion, has been altered or repaired in a way that affects or detracts from the performance of the tool.

PASLODE MAKES NO WARRANTY, EXPRESSED OR IMPLIED, RELATING TO MERCHANTABILITY, FITNESS, OR OTHERWISE, EXCEPT AS STATED ABOVE, and Paslode's liability AS STATED ABOVE AND AS ASSUMED ABOVE is in lieu of all other warranties arising out of, or in connection with, the use and performance of the tool, except to the extent otherwise provided for by applicable law.

PASLODE SHALL IN NO EVENT BE LIABLE FOR ANY DIRECT, INDIRECT, OR CONSEQUENTIAL DAMAGES WHICH MAY ARISE FROM LOSS OF ANTICIPATED PROFITS OR PRODUCTION, SPOILAGE OF MATERIALS, INCREASED COST OF OPERATION, OR OTHERWISE.

Paslode reserves the right to change specifications, equipment, or designs at any time without notice and without incurring obligation.

## TOOL AND FASTENER SPECIFICATIONS

### TOOL SPECIFICATIONS

	<b>BRAD NAILER</b>	<b>BRAD NAILER-STAPLER</b>
<b>MODEL NO.</b>	P18-200	P18-FS200
<b>HEIGHT</b>	9.5"	9.5"
<b>WIDTH</b>	2.25"	2.25"
<b>LENGTH</b>	9.9"	9.9"
<b>WEIGHT</b>	2.8 lbs	2.9 lbs
<b>MAGAZINE CAPACITY</b>	100 Nails	100 Nails or Staples

### FASTENER SPECIFICATIONS

	<b>BRAD NAILER</b>	<b>BRAD NAILER-STAPLER</b>
<b>NAIL TYPE</b>	Paslode® 18 Gauge, Straight Brad Nails	Paslode ® 18 Gauge, Straight Brad Nails
<b>NAIL LENGTH</b>	5/8" to 2"	5/8" to 2"
<b>STAPLE TYPE</b>	N/A	Paslode ® 18 Gauge, Narrow Crown Staples
<b>STAPLE LENGTH</b>	N/A	5/8" - 1-1/2"

### TOOL AIR FITTINGS:

This tool uses a 1/4" N.P.T. male plug. The inside diameter should be .28" (7mm) or larger. The fitting must be capable of discharging tool air pressure when disconnected from the air supply.

### OPERATING AIR PRESSURE:

80 to 110 p.s.i. (5.5 to 8.0 bars). Select the operating air pressure within this range for best tool performance.

**DO NOT EXCEED THIS RECOMMENDED OPERATING PRESSURE.**

# SAFETY INSTRUCTIONS

## SAFETY FIRST

These safety instructions provide information necessary for safe operation of Paslode® tools. **DO NOT ATTEMPT TO OPERATE THE TOOL UNTIL YOU READ AND UNDERSTAND ALL SAFETY PRECAUTIONS AND MANUAL INSTRUCTIONS.**

### WEAR EYE AND HEARING PROTECTION

Always wear hearing and eye protection devices, that conform to ANZI Z87.1 requirements, when operating or working in the vicinity of a tool. As an employer you are responsible for enforcing the use of eye protection. Wear hard hats in environments that require their use.



### THE TOOL MUST BE USED ONLY FOR THE PURPOSE FOR WHICH IT WAS DESIGNED

Do not throw the tool on the floor, strike the housing in any way or use the tool as a hammer to knock material into place.



### NEVER ENGAGE IN HORSEPLAY WITH THE TOOL

The tool is not a toy so do not use it like one. Never engage in horseplay with the tool or point it at yourself or any other person, even if you think it is not loaded.

### NEVER ASSUME THE TOOL IS EMPTY

Check the tool nose for fasteners that may be left in the tool. Even if you think the tool is empty or disconnected, never point it at anyone or yourself. Unseen fasteners could fire from the tool.

### NEVER CLAMP THE TOOL NOSE IN A LOCKED OR OR OPERATING POSITION

The nose of the tool must never be tampered with, disabled or clamped in a locked or operating position since this will cause the tool to drive a fastener any time the work contacting element depressed.

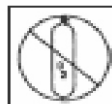
### DO NOT LOAD FASTENERS WITH THE AIR LINE CONNECTED, OR WITH THE TOOL TRIGGER OR WORK CONTACTING ELEMENT DEPRESSED

When loading fasteners into the tool be sure you disconnect the air line and that you do not depress the nose trigger or work contacting element.



### OPERATE THE TOOL ONLY ON A WORKPIECE

The tool should be operated only when it is in contact with the work piece. Even then you should be careful when fastening thin material or working near the edges and corners of the work piece since the fasteners may drive through or away from the work piece.



### DO NOT DISABLE OR REMOVE THE WORK CONTACTING ELEMENT

This tool is equipped with a safety mechanism, called a work contacting element, to help prevent accidental firing. Never tamper with, disable or remove the work contacting element. Do not use the tool unless the work contacting element is working properly. The tool could fire unexpectedly.

### DISCONNECT THE TOOL WHEN NOT IN USE

Always disconnect the tool from the air line when it is not in use, when you leave the work area or when moving the tool to a new location. The tool must never be left unattended because people who are not familiar with the tool might handle it and injure themselves or others.

### CARRY THE TOOL ONLY BY THE HANDLE

Always carry the tool by the tool handle. Never carry the tool by the air hose or with the trigger depressed since you could drive a fastener unintentionally and injure yourself or someone else.

### DO NOT WEAKEN THE TOOL HOUSING

The tool housing is a pressure vessel and should never be weakened by having your company's name, area of work or anything else stamped or engraved into its surface.

### DISCONNECT THE TOOL WHEN PERFORMING REPAIRS AND CLEARING JAMS

Never attempt to clear a jam or repair a tool unless you have disconnected the tool from the air line and removed all remaining fasteners from the tool.

### ALWAYS USE THE PROPER FITTING FOR THE TOOL

Only MALE pneumatic type air connectors should be fitted to the tool, so that high pressure air in the tool is vented to atmosphere as soon as the air line is disconnected.

NEVER install FEMALE quick disconnect couplings on the tool. Female couplings will trap high pressure air in the tool when the air line is disconnected, leaving the tool charged and able to drive at least one fastener.

### DO NOT EXCEED THE MAXIMUM RECOMMENDED AIR PRESSURE

Operate the tool only at the recommended air pressure. Do not exceed the maximum air pressure marked on the tool. Be sure the air pressure gauge is operating properly and check it at least twice a day.

Never use any bottled air or gases such as oxygen to operate the tool since they could cause the tool to explode.

### INSPECT TOOL FOR PROPER OPERATION

Clean the tool at least daily and lubricate as required. Never operate a dirty or malfunctioning tool.

### USE ONLY PASLODE RECOMMENDED PARTS

Use only parts specifically designed and recommended by Paslode for use in the tool and for work to be done. Using unauthorized parts and fasteners or modifying the tool in any way creates dangerous situations. Replace all missing warning labels---refer to tool schematic for correct placement and part number.



## WARNING

Failure to follow any of the above instructions could result in severe personal injury to tool user and bystanders or cause damage to tool and property.

## TOOL OPERATION

Your Paslode tool requires lubrication before you use it for the first time. Disconnect the air supply before lubricating. Put one drop of oil (included with tool) into air fitting. To use tool follow these steps:

1. SAFETY - All tool operators and their immediate supervisors must become familiar with the operator safety instructions before operating the tool. The safety instructions are included with this manual.
2. Included with each tool are one copy of this Safety and Maintenance manual and one copy of the Tool Schematic. Keep these publications for future reference.
3. Install the male air fitting (if not already fitted). The fitting must be a male pneumatic type that discharges the air from the tool when the air line is disconnected.
4. Install a filter/regulator/lubricator unit, with a gauge as close as practical to the tool, preferably within ten feet. In general, no other special installation is required.
5. If the operator is working at a bench or table, it is usually best to run the air line underneath the bench. A small tray under the bench top can hold the fastener supply and the tool when not in use.
6. If this tool does not work when it is first connected, do not try to make repairs. Call your Paslode representative immediately.

### Fasteners

The Paslode brad nailer and nailer-stapler drives Paslode® 18 gauge fasteners designed to be used with the tool. The use of fasteners that do not meet Paslode standards could cause tool damage and will void all warranty claims.

See FASTENER SPECIFICATIONS section for correct Paslode® fasteners for your tool.

### Loading Fasteners

1. Hold the tool in your right hand; disconnect compressed air hose from the tool. Rotate the tool 90 degrees (as the nose of the tool points to the left).
2. Press the rail latch release at the end of the magazine. The rail cover will automatically open.
3. Insert the nail strip into the magazine rail. For nails always place the point of the nails on the bottom rail. For staples, insert crown of staple over top of rail.
4. Press the rail cover forward toward the nose piece until the latch clicks into place. The tool is now ready for use.

### Depth of Drive Adjustment

1. Disconnect the air supply.
2. The depth of drive adjustment is done by turning the adjustment wheel located below the trigger.
3. Set nail depth height as shown by the arrows located above adjustment wheel.
4. The adjustment wheel will stop at the top and bottom nail depth limits.



**WARNING**



**Do not clamp or hold trigger with anything other than your hand.**

## TOOL OPERATION (Continued)

### Trigger Methods:

The Paslode 18 Gauge Brad Nailer and Brad Nailer have a triggering system than can be switched from sequential to contact trip (successive drive) operation.

To switch the trigger, first disconnect air supply, press in the round orange button on the right side of the trigger and rotate the left side of the button to the desired triggering method. The TTT indicates contact trip (successive drive) operation and the T indicates sequential operation.



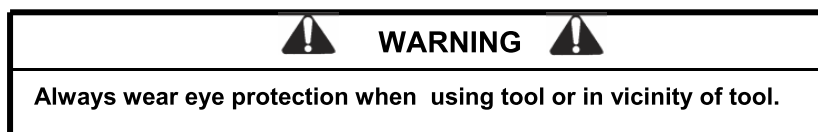
**Successive (Bump/Bounce) Driving** - Grasp the handle firmly. Squeeze the trigger and move the tool along the work piece with a bouncing motion, depressing the work contacting element at the points where you want to drive a fastener.

Keep the trigger depressed and continue to bounce the work contacting element against the work piece, positioning the tool above as carefully as possible.

When the desired number of fasteners have been driven, release the tool trigger to avoid unintentional fastener discharge.

**Sequential Operation** - The sequential setting T prevents successive or "bounce" driving.

Depress the work contacting element and hold it against the work surface before pulling the trigger. After each fastener is driven, completely release the trigger and lift the tool from the work surface.



### Clearing Jams:

Jams are often caused when a fastener or a fastener fragment becomes wedged between the driver blade and nail guide. Using the wrong fastener can also cause jams.

1. Disconnect the air supply and remove the fastener strip.
2. Pull open the nose latch and open the jam-clearing nose cover.
3. Remove any debris that has built up during operation.
4. Remove any jammed fastener(s). If fastener is difficult to grasp, use needle nose pliers instead of fingers.
5. If the driver blade is not retracted into the housing, insert a flat-blade screwdriver so that it touches the tip of the driver blade and push the driver blade back into the housing, freeing the jam.
6. Close the nose cover and latch securely.
7. Tool is now ready to use.



### Adjustable Exhaust:

The direction of the exhaust air can be changed by rotating the black air deflector on the cap of the tool.

# MAINTENANCE

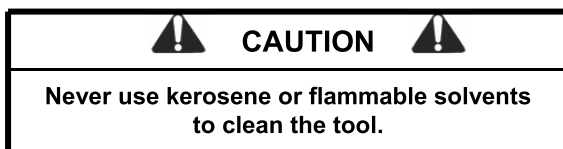
Paslode® tools are built for ease of maintenance. A few simple details will assure trouble-free operation and long tool life. Anyone who uses or maintains the tool must read the safety and maintenance instructions. Study the schematic drawing before starting any repairs on the tool.

Air-operated tools must be inspected periodically, and worn or broken parts must be replaced to keep the tool operating safely and efficiently. Also the items on the maintenance chart must be checked often.

When temperatures are below freezing, tools should be kept warm by any convenient, safe method.

Tool operators working outdoors or in unheated areas in extremely cold temperatures should use Paslode pneumatic oil with antifreeze in the lubricator, Part No. 219090 (8oz.)

Depending on the amount of tool use, take the tool apart and wash away any sludge with degreaser cleaner (Paslode Part No. 219086) to keep the tool operating efficiently.



Cleaning air-operated tools with solvents removes the thin coating of grease applied to the cylinder wall and O-rings at the factory. To replace this coating of grease, use Chemplex grease (Paslode Part No. 403734).

## Testing the Tool After Servicing

After replacing any part or parts, it is important to check the tool for proper operation. This ensures that the tool was put together correctly, is safe to use, and will perform the job properly.

- Ensure that all hardware is tight.
- Ensure that the work contacting element is installed correctly in relation to the trigger, and that both parts move freely.
- Ensure that the magazine is properly attached.
- Ensure that the required safety information on the tool is legible.
- Use only Paslode approved fasteners in the tool, and ensure that they are correct for the application.
- Ensure that a male air fitting is securely connected to the tool.
- Test the tool by driving fasteners into a work piece identical to the tool's application.
- Check the tool for air leaks during testing and for the proper sequence of operation.
- Ensure that all fasteners are driven to the same depth and that the crown of the fastener is flush with the work piece.

## Tool Lubrication

It is most important that the tool be properly lubricated by keeping the air line lubricator filled and correctly adjusted. Without proper lubrication the tool will not work properly and parts will wear prematurely. Use only Paslode recommended lubricants.

If a filter/regulator/lubricator is not installed on the air system, air operated tools should be lubricated with 2 to 3 drops of Paslode pneumatic oil (part # 403720) directly through the male fitting in the tool housing. This should be done before and after each use.

## OPERATOR TROUBLESHOOTING



**CAUTION**



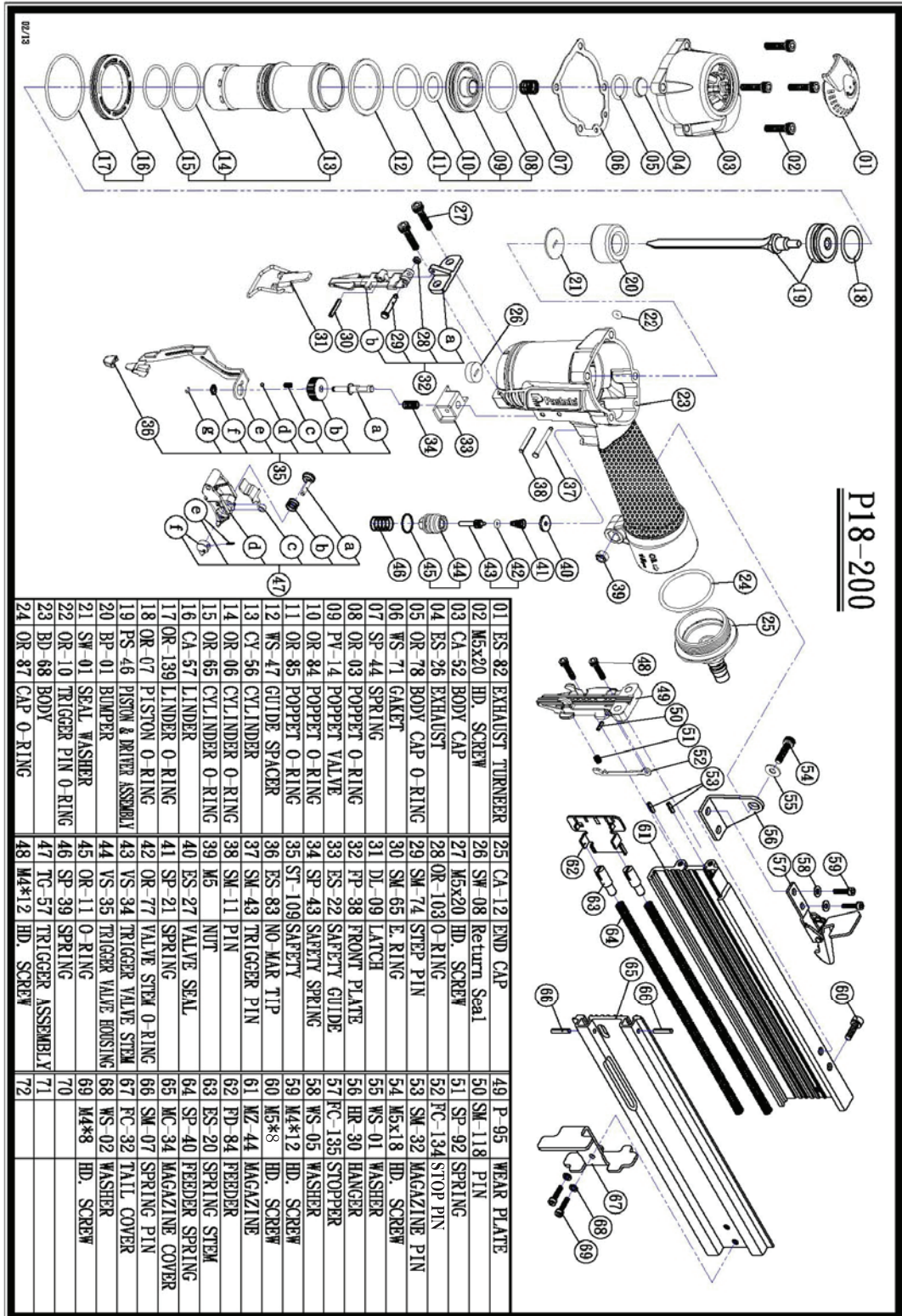
Disconnect the tool air supply when performing repairs or clearing jams.

<b>PROBLEM</b>	<b>CORRECTIVE ACTION</b>
Fasteners will not drive completely into wood.	Adjust depth of drive to preferred nail depth.  If still not driving, increase air pressure (do not exceed 110 psi).
Fasteners drive too deeply into wood.	Adjust depth of drive to preferred nail depth.  If still too deep, reduce air pressure.
Air leaks at cap when tool is connected to air.	Tighten cap screws.
Nail jammed in nose	Open nose piece, remove jammed nail.



# PARTS LEGEND

# P18-200



## P18-200

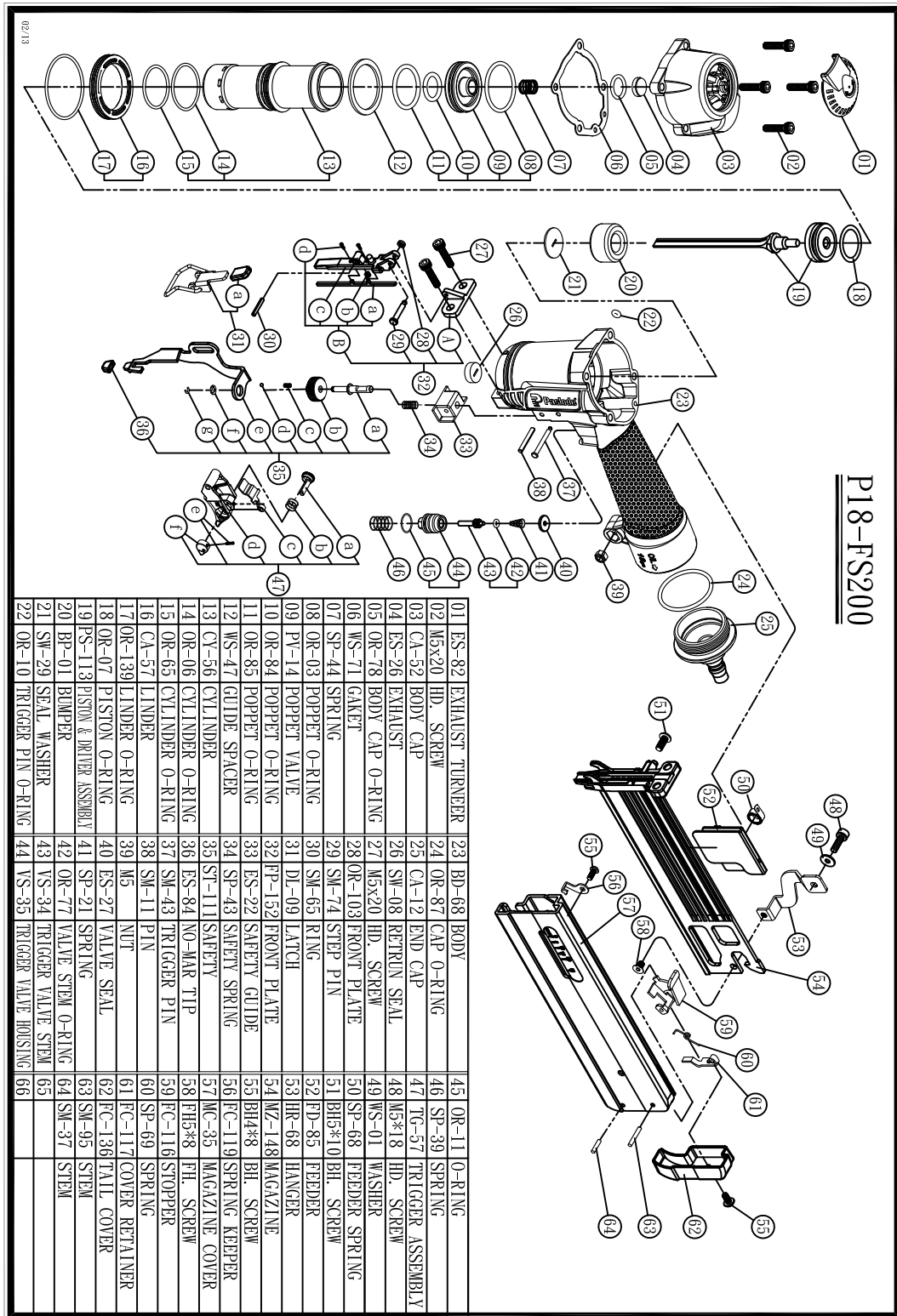
01	ES-82 EXHAUST TURNER	25	CA-12 END CAP	49	P-95 WEAR PLATE
02	M5x20 HD. SCREW	26	SW-08 Return Seal	50	SM-118 PIN
03	CA-52 BODY CAP	27	M5x20 HD. SCREW	51	SP-92 SPRING
04	ES-26 EXHAUST	28	OR-103 O-RING	52	FC-134 STOP PIN
05	OR-78 BODY CAP O-RING	29	SM-74 STEP PIN	53	SM-32 MAGAZINE PIN
06	WS-71 GASKET	30	SM-65 E. RING	54	M5x18 HD. SCREW
07	SP-44 SPRING	31	DL-09 LATCH	55	WS-01 WASHER
08	OR-03 POPPET O-RING	32	FP-38 FRONT PLATE	56	HR-30 HANGER
09	PV-14 POPPET VALVE	33	ES-22 SAFETY GUIDE	57	FC-135 STOPPER
10	OR-84 POPPET O-RING	34	SP-43 SAFETY SPRING	58	WS-05 WASHER
11	OR-85 POPPET O-RING	35	ST-109 SAFETY	59	M4*12 HD. SCREW
12	WS-47 GUIDE SPACER	36	ES-83 NO-MAR TIP	60	M5*8 HD. SCREW
13	CY-56 CYLINDER	37	SM-43 TRIGGER PIN	61	M2-44 MAGAZINE
14	OR-06 CYLINDER O-RING	38	SM-11 PIN	62	PD-84 FEEDER
15	OR-65 CYLINDER O-RING	39	M5 NUT	63	ES-20 SPRING STEM
16	CA-57 LINDER	40	ES-27 VALVE SEAL	64	SP-40 FEEDER SPRING
17	OR-139 LINDER O-RING	41	SP-21 SPRING	65	MC-34 MAGAZINE COVER
18	OR-07 PISTON O-RING	42	OR-77 VALVE STEM O-RING	66	SM-07 SPRING PIN
19	PS-46 PISTON & INLET ASSEMBLY	43	VS-34 TRIGGER VALVE STEM	67	FC-32 TAIL COVER
20	BP-01 BLINPER	44	VS-35 TRIGGER VALVE HOUSING	68	WS-02 WASHER
21	SW-01 SEAL WASHER	45	OR-11 O-RING	69	M4*8 HD. SCREW
22	OR-10 TRIGGER PIN O-RING	46	SP-39 SPRING	70	
23	BD-68 BODY	47	TC-57 TRIGGER ASSEMBLY	71	
24	OR-87 CAP O-RING	48	M4*12 HD. SCREW	72	

### ⚠ WARNING ⚠

All parts must be periodically inspected and replaced if worn or broken. Failure to do this can affect the tool's operation and present a safety hazard.

# PARTS LEGEND

# P18-FS200



## ⚠ WARNING ⚠

All parts must be periodically inspected and replaced if worn or broken. Failure to do this can affect the tool's operation and present a safety hazard.



**ACCESSORIES**  
**(not included with tool)**

**Lubricants**

Lubricating Oil 16 oz.

Part No. 403720

Lubricating Oil with Antifreeze 8 oz.

Part No. 219090

---

**Degreaser Cleaner**

Ideal cleaner for all Paslode tools.

Part No. 219086

---



ITW Construction Products  
120 Travail Rd. Markham, On L3S 3J1  
[www.itwconstruction.ca](http://www.itwconstruction.ca)