



***PowerMaster Plus™***  
**MODEL F-350S**  
**Strip Nailer**



***PowerMaster Plus™***

**IMPORTANT!**  
**DO NOT DESTROY**

Always refer to safety and maintenance manual #403606 for detailed information on this tool. It is the customers responsibility to have all operators and service personnel read and understand this information.

**TOOL SCHEMATIC AND  
PARTS**

# PARTS LEGEND *PowerMaster Plus™* F-350S, 501000

1	501300	4	S.H.C.S. 1/4-20 x 1-1/4"	39	501006	1	Spring, W.C.E.
▲ 2	501043	1	T.H.S.C.S. 1/4-20 x 1/2"	40	501363	1	Upper Work Contact Element (W.C.E.)
3	501016	1	Air Deflector	41	500731	1	Lower Work Contact Element (W.C.E.)
4	501017	1	Cap	42	091618	1	S.H.C.S 1/4-20 x 1/2"
*5	092042	2	O-Ring	43	002187	1	Lock Washer 1/4"
*6	500461	1	O-Ring	44	404800	1	Washer, W.C.E.
→ 7	500091	1	Spring, Main Valve	45	500531	1	Follower
→ 8	500090	1	Main Valve	46	501046	1	Drum Pin Assembly
*9	095432	1	O-Ring, Post	47	500513	1	Negator Spring Assembly
10	500454	1	Post	▲ 48	404904	2	S.H.C.S. 1/4-28 x 5/8"
11	500453	1	Bumper, Post	49	500509	1	Front Bracket
12	402906	1	B.H.S.C.S. 10-32 x 5/8"	50	501390	1	Magazine
→ *13	510115	1	Ring Seal, Piston	**51	500458	1	Warning Label
→ *14	510114	1	O-Ring, Piston	52	500717	1	Nail Cover
→ 15	510113	1	Piston	53	501607	1	End Cap, Magazine - Left Half
■ *16	501218	1	Driver Blade	54	501606	1	End Cap, Magazine - Right Half
17	402011	1	Seal, Sleeve	55	500848	1	Latch, Follower
→ 18	510110	1	Sleeve	56	501028	1	Spring, Latch
→ *19	092235	2	O-Ring, Sleeve	57	501026	1	S.H.C.S. 8-32 x 2"
→ 20	510111	1	Flange, Sleeve	58	066840	1	S.H.C.S. 8-32 x 3/4"
*21	501002	1	O-Ring	59	401955	2	Flat Washer #8
*22	501001	1	Gasket, Cap	60	404325	2	Stop Nut 8-32
23	501286	1	Housing	61	501044	1	Long Arm Hex Key 3/16
24	501334	1	Label, Housing - Right	62	500516	1	B.H.C.S. 5/16-24 x 7/8"
25	501333	1	Label, Housing - Left	63	501347	1	Rafter Hook Assembly
26	501039	1	Trigger, Sequential - Gray	64	501219	1	End Plug
	501048	1	Trigger, Bounce - Orange	65	500525	1	Crown Lock Nut 5/16-24
27	402669	1	Pin, Trigger	66	501299	2	S.H.C.S. 1/4-20 x 1" w/ Flat Washer
28	402668	1	Rubber Retaining Washer	67	515021	1	Air Fitting 1/4" Male
29	071297	3	Roll Pin 1/8 x 1-1/8"				
30	097748	1	Spring, Valve Pin				
31	097746	1	Valve Pin				
*32	092174	1	O-Ring, Valve Body				
33	401958	1	Valve Body				
*34	500866	1	Bumper				
35	500729	1	Blade Seal				
36	501156	1	RounDrive 30° Nose				
37	095417	4	Lock Washer 5/16"				
▲ 38	009016	4	S.H.C.S 5/16-18 x 1"				

Sub-Assemblies			
→ A1	501056	1	Cap and Main Valve Assembly
→ A2	510116	1	Piston Assembly
→ A3	500126	1	Sleeve Assembly
A4	500877	1	Magazine Assembly

\* Denotes Normal Wear Items

\*\* Make sure Warning Label (Part No. 500458) is properly affixed. Replace if necessary. Label available at no charge through the Service Department.

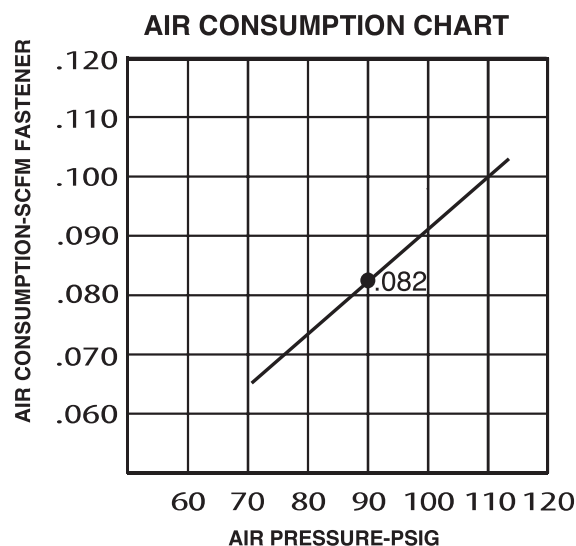
▲ Apply Loctite 242 (Blue) Part No. 093500

■ Apply Loctite Green Part No. 401491

→ Denotes New Change

## WARNING

All parts must be periodically inspected and replaced if worn or broken. Failure to do this can affect the tool's operation and present a safety hazard.

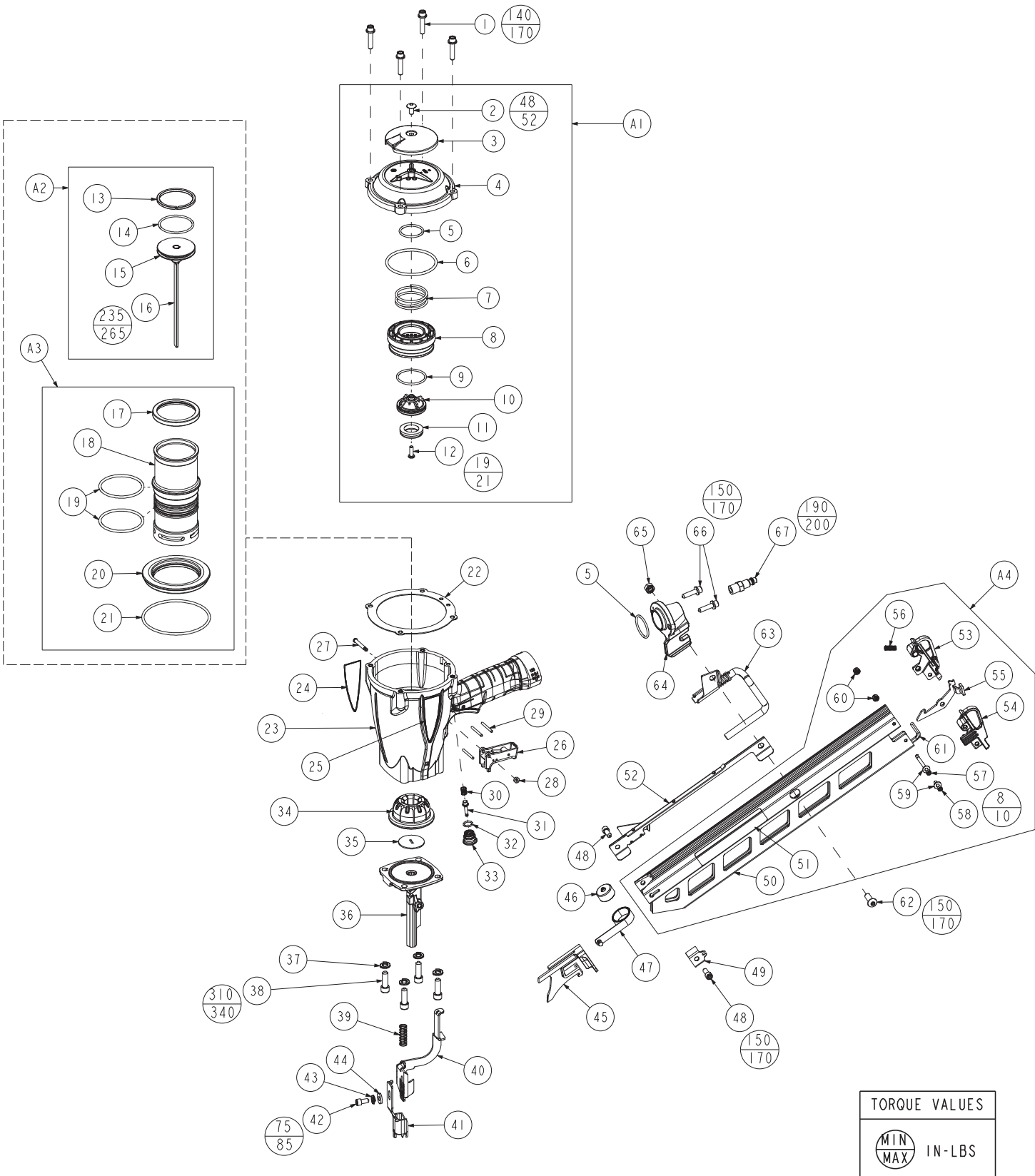


**Note: For optimum performance Paslode recommends the use of a 3/8" Male fitting.**

# PowerMaster Plus™

## F-350S

501000



# MAINTENANCE



This tool is designed for hassle-free maintenance. A few simple details will assure trouble-free operation and long tool life. Anyone who uses or maintains the tool must read the safety and maintenance instructions. Study the schematic drawing before starting any repairs on the tool.

Air-operated tools must be inspected periodically, and worn or broken parts must be replaced to keep the tool operating safely and efficiently. Also, the items on the maintenance chart must be checked often.

## Hassle-Free Maintenance

This tool is built with a self-lubricating cylinder that eliminates the need for daily lubrication. It is recommended to fully clean and relubricate the tool annually or every 500k shots depending on the usage.

- For the cleaning, take the tool apart and wash away grime build-up with Paslode® tool cleaner (Part No. 219348).

 <b>CAUTION</b> 
<b>Never use kerosene or flammable solvents to clean the tool.</b>

- The tool cleaner also removes the coating of grease applied to the O-rings at the factory, so it is necessary to fully relubricate the O-rings with Chemplex grease (Part No. 403734).

Use only Paslode's recommended cleaners and lubricants. Substitutes may harm the compounds in the tool's O-rings and other polymer parts. Additionally, Part No. 403720 is a pneumatic tool-specific lubricating oil that can be used in the air line lubricator.

## Cold Weather Care

When temperatures are below freezing, tools should be kept warm by any convenient, safe method. If this is not possible, the following procedure should be used to warm up the tools.

- Reduce the regulated air pressure to 30 psi.
- Remove all fasteners from the tool.
- Connect an air line and fire the tool without fasteners. The reduced air pressure will be enough to fire the tool. Slow speed operation tends to warm up moving parts. Slowing up the piston helps the bumper and the O-rings to become springy.

 <b>CAUTION</b> 
<b>Never fire the tool without fasteners at high pressure.</b>

- Once the tool is warmed up, readjust the regulator to the proper working pressure and reload the tool.
- Tool operators working outdoors or in unheated areas in extremely cold temperatures can also use pneumatic oil with antifreeze in the air line lubricator (Part No. 219090).
- Open the drain on the air compressor tank to drain any moisture at least daily in extremely cold or humid weather. A few ounces of antifreeze in the tank will keep the air line system free of frost.

## Testing the Tool After Servicing

After replacing any part or parts, it is important to check the tool for proper operation. This ensures that the tool was put together correctly, is safe to use, and will perform the job properly.

- Ensure that all hardware is tight. See tool schematic for recommended torque.
- Ensure that the work contacting element is installed correctly in relation to the trigger, and that both parts move freely.
- Ensure that the magazine is properly attached.
- Ensure that the required safety information on the tool is legible.
- Use only Paslode® approved fasteners in the tool, and ensure that they are correct for the application.
- Ensure that a male air fitting is securely connected to the tool.
- Test the tool by driving fasteners into a workpiece identical to the tool's application.
- Check the tool for air leaks during testing and for the proper sequence of operation.
- Ensure that all fasteners are driven to the same depth and that the crown of the fastener is flush with the workpiece.

Most minor problems can be resolved quickly and easily using the maintenance table that follows. If problems persist, contact your Paslode® dealer for assistance.

## MAINTENANCE - Continued

 <b>CAUTION</b> 
<b>Disconnect the tool when performing repairs or clearing jams.</b>

### MAINTENANCE TABLE

ACTION	WHY	HOW
Drain air line filter(daily).	Prevent accumulation of moisture and dirt.	Open manual petcock (most air supply systems have such a valve).
Keep lubricator filled.	Keep tool lubricated.	Fill with pneumatic tool lubricant. Part No. 403720.
Clean filter element-then blow air through filter in direction opposite to normal flow.	Prevent clogging of filter with dirt.	Wash with soap and water or follow manufacturers instructions.
Check that all screws on tool are tight.	Prevent air leakage and promote efficient operation.	Check screws daily.
Keep work contacting element working properly.	Promote operator safety and efficient tool operation.	Blow clean daily.
Keep magazine and feeder mechanism clean.	Prevent jamming of fasteners.	Blow clean daily.
Lubricate "O" rings that are replaced.	Assure long life and proper operation of tool.	Use Chemplex grease, Part No. 403734.
Use only Paslode® replacement parts.	Keep tool operating efficiently and maintain Paslode® tool warranty.	Order any replacement parts needed from your local Paslode® Dealer.

# OPERATOR TROUBLESHOOTING

 <b>CAUTION</b> 
<b>Disconnect the tool when performing repairs or clearing jams.</b>

PROBLEM	CORRECTIVE ACTION
Fasteners will not drive completely into wood.	Adjust work contacting element (retract length).  Increase air pressure (do not exceed 120 psi).
Fasteners penetrate properly during normal operation, but won't drive fully at faster speeds.	Increase air flow to tool -- use larger air lines (3/8 inch ID minimum).
Fasteners drive too deeply into wood.	Reduce air pressure.  Adjust work contacting element (extend length).
Tools skips during operation - no fasteners are driven from time to time.	Check magazine for proper fasteners. Magazine follower should slide freely. Clean as needed to remove debris.  Make sure correct fasteners are being used. Use fasteners that meet Paslode specifications only.  Increase air flow to tool -- use larger air lines (3/8 ID minimum).  Adjust work contacting element where available.
Tool operates, but no fasteners are driven.	Check magazine for proper fasteners. Fasteners should slide freely with no follower pressure.  Increase air pressure (do not exceed 120psi).
Air leaks at cap when tool is connected to air.	Tighten cap screws.

# TOOL WARRANTY



An Illinois Tool Works Company  
155 Harlem Avenue  
Glenview, IL 60025

## MODEL F-350S Framing Nailer

### TOOL WARRANTY AND LIMITATIONS

Paslode® warrants that newly purchased power fastening tools, parts and accessories will be free from defects in material and workmanship for the period shown below, after the date of delivery to the original user.

#### ONE-YEAR LIMITED WARRANTY

A one-year warranty will apply to all parts, except those which are specifically covered by an extended warranty.

#### FIVE-YEAR EXTENDED LIMITED WARRANTY

A five-year warranty will apply to all housing and cap assembly castings.

#### WARRANTY STATEMENT

**This warranty is limited to tools sold and service requested in the United States. To obtain information on warranty service in the United States, refer to the Service Center listing that was provided with your tool.**

Paslode's sole liability hereunder will be to replace any part or accessory which proves to be defective within the specific time period. Any replacement part or accessory provided in accordance with this warranty will carry a warranty for the balance of the period of warranty applicable to the part it replaces. This warranty does not apply to part replacement required due to normal wear.

This warranty is void as to any tool which has been subjected to misuse, abuse, accidental or intentional damage, use with fasteners, not meeting Paslode's specification, size, or quality, improperly maintained, repaired with other than genuine Paslode® replacement parts, damaged in transit or handling, or which, in Paslode's opinion, has been altered or, repaired in a way that affects or detracts from the performance of the tool.

PASLODE MAKES NO WARRANTY, EXPRESSED OR IMPLIED, RELATING TO MERCHANTABILITY, FITNESS, OR OTHERWISE EXCEPT AS STATED ABOVE, AND PASLODE'S LIABILITY AS STATED ABOVE AND AS ASSUMED ABOVE is in lieu of all other warranties arising out of, or in connection with, the use and performance of the tool, except to the extent otherwise provided by applicable law. PASLODE® SHALL IN NO EVENT BE LIABLE FOR ANY DIRECT, INDIRECT, OR CONSEQUENTIAL DAMAGES, INCLUDING, BUT NOT LIMITED TO, DAMAGES WHICH MAY ARISE FROM LOSS OF ANTICIPATED PROFITS OR PRODUCTION, SPOILAGE OF MATERIALS, INCREASED COST OF OPERATION, OR OTHERWISE.

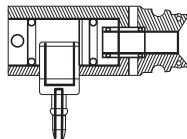
Paslode® reserves the right to change specifications, equipment, or designs at any time without notice and without incurring obligation.



# ACCESSORIES

## Remote Fire Valve

This valve via a positive air signal allows a machine mounted tool to be operated from an automatic air valve or foot pedal system.



Part No. 1X0713

## Adjustable No-Mar Tip Kit

Prevents you from marring wood surfaces. Kit includes an extra rubber tip.  
(Replacement Rubber Tip only - Part No. 501022)

Part No. 219228

## Cap Hanger Bracket

Attaches to the top of tool for storage or counter-balancing.

Part No. 1X0856

## Tool Repair Kit

Repairs cap air leaks, lack of power, skipping and/or sluggishness.

Part No. 219551

## Trigger Valve Kit

Repairs trigger valve air leaks.

Part No. 219224

## Lubricants and Loctite

Loctite 242 (Blue)  
Lubricating Oil 16 oz.  
Lubricating Oil with Antifreeze  
Chemplex 710 Lubricant 1 lb.  
Lubricant 5 gram tube



Part No. 093500  
Part No. 403720  
Part No. 219090  
Part No. 403734  
Part No. 219188

## Degreaser Cleaner

Ideal cleaner for all Paslode tools.

Part No. 219086

## Large Nylon Tool Case

Part No. 219246

## Safety Glasses

Clear  
Tinted

Part No. 402510  
Part No. 402512

# SAFETY INSTRUCTIONS

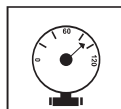
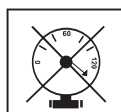
## WEAR EYE AND HEARING PROTECTION



Always wear hearing protection and eye protection devices, including side shields when operating or working in the vicinity of a tool.

Never use any bottled air or gases such as oxygen to operate the tool since they could cause the tool to explode.

## DO NOT EXCEED MAXIMUM RECOMMENDED AIR PRESSURE



Operate the tool using only the recommended air pressure. Do not exceed the maximum air pressure marked on the tool. Be sure the air pressure gauge is operating properly and check it at least twice a day.